

## DAMLINES

# Duroc-Line 46R/46W

## ROBUST AND PRODUCTIVE



The Rattlerow Duroc lines have been developed since 1980 in response to demand for a robust and productive female line capable of improving eating quality and manageable under more extensive systems.

Testing and selection concentrates on improvement in reproductive traits. Numbers born and reared, weaning weight, feed intake, physical soundness and regular breeding under commercial environments are key factors measured and used within the Rattlerow BLUP programme.

The Rattlerow Red and White Duroc lines demonstrate outstanding hybrid vigour when used in the Rattlerow breeding programme and produce a parent gilt that is easy to manage and productive across a range of systems.

- **Robust viable piglets**
- **Maximum heterosis**
- **Ideal eating quality**
- **Easy to breed and rear**
- **Productive across differing systems**
- **Excellent numbers born and reared**
- **Good temperament and mothering ability**
- **High feed intake**
- **Regular breeding and good longevity**

- **Good growth and feed conversion**
- **Uniform vigorous piglets**

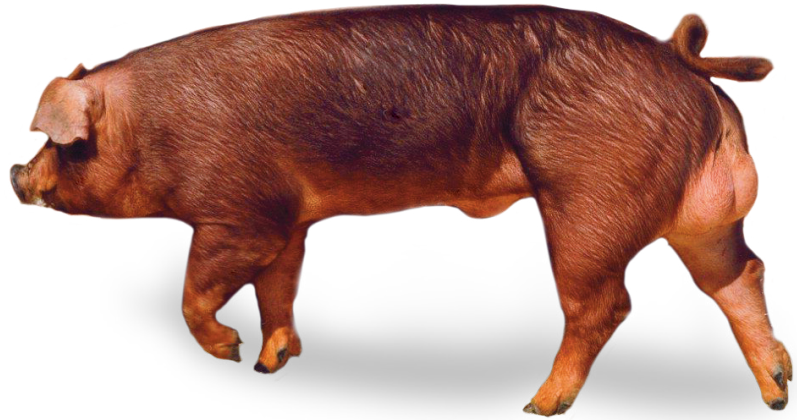
Maternal Line GP AI from top performing Rattlerow Red and White Duroc boars is available from a number of our high health EU licenced Klasse Ai studs. The GENmatch programme permits breeders to operate a closed herd policy for the production of parent gilts on their own farms. Please contact us for further information.

## MATERNAL GP DAM LINES:

GP Landrace 12 : GP Large White 36 : GP Duroc 46R/46W

# GENmatch and Klasse Ai

The GENmatch system offers farmers the ability to introduce highly prolific dam line semen, from Klasse Ai, in a cost effective way to produce their own purebred stock and to breed any of the three Rattlerow parent gilts. The system allows producers to operate a closed herd policy or to greatly reduce incoming stock in order to stabilise and safeguard health. It also allows units to keep genetically close to the company nucleus and maintain genetic progress.



Farmers may either introduce the GENmatch system without any introduction of purebred females by undergoing a grading up process though AI only. Alternatively, customers wishing for a more rapid programme, may opt for introduction of high health purebred dam line gilts direct from a nucleus herd after a full veterinary consultation.

Rattlerow takes great pride in the reputation it has gained over many years for the quality of its stock. Great emphasis is placed

on the nutrition and housing of young gilts to ensure their correct development and to maximise their breeding life and calm temperament. Strict selection of stock focusing on teats, feet, legs and body conformation is recognised as a key component in delivering a quality product.

Rattlerow understands that not all farms experience the same financial advantage by focusing exclusively on high numbers born and have therefore taken a balanced

approach to selection within their hyperprolific programme. Some breeders want to maximise numbers born and reared whilst others will wish to focus on producing higher weaning weights with less piglet mortality and variability. Rattlerow have therefore developed three parent lines, Whiteland, Whiteroc and Landroc. These lines allow customers to match their requirements to their own financial situation and choose the best parent gilt to maximise profitability.

### Genetic progress over the last 20 years

